

Name \_\_\_\_\_

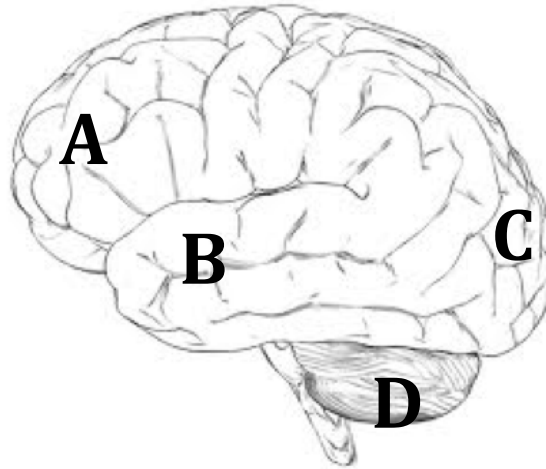
**BRAIN ANATOMY**

**EYE ANATOMY**

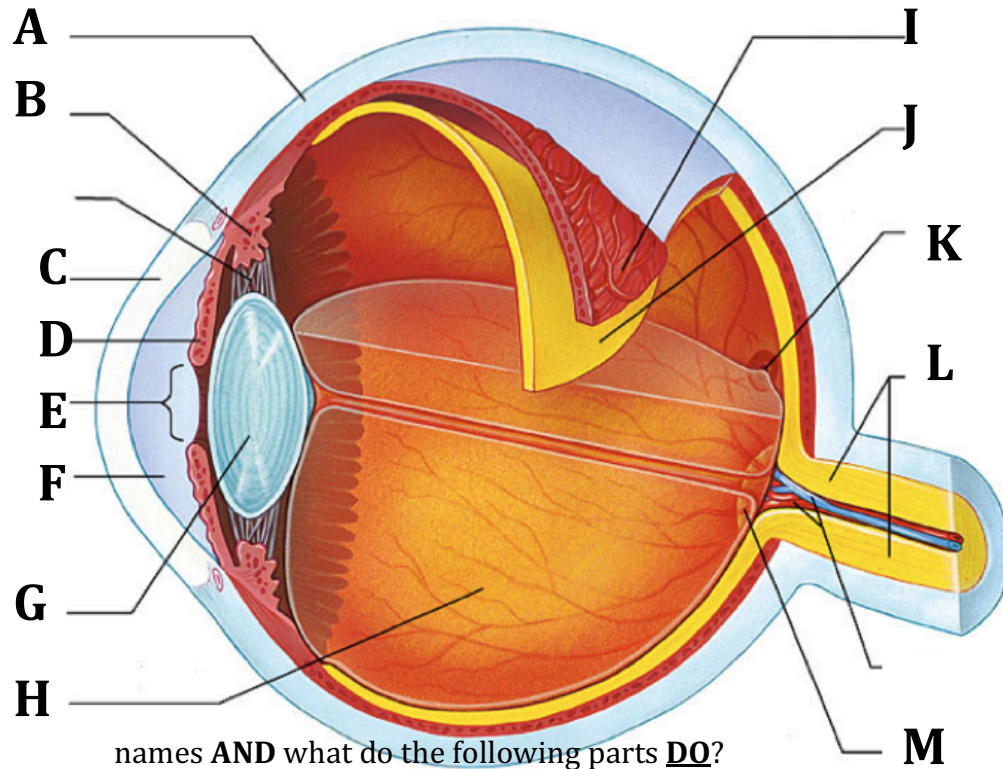
**EAR ANATOMY**

# ASSIGNMENT

- 1) Which part of the brain deals primarily with vision and/or sight?        occipital
- 2) This part of the brain is associated with memory.        cerebrum
- 
- 3) The part of his brain that allows Joe to balance on his bike without falling over is... (letter or name of part)      D. -cerebellum



- 
- 4) This part of the brain relays information between the left and right sides of the brain (**don't use above picture**)        corpus callosum
- 5) Neurons that directly control the heart and diaphragm originate in this part of the brain: (**don't use above picture**)        medulla O
- 6) The part of the brain most associated with emotions:        parietal
- 7) The motor cortex is located anterior(in front of) to the...        parietal
- 8) This part of the brain stem relays information from the spinal cord to the cerebrum & the rest of the brain.        pons
- 9) Damage to this lobe can result disruptions memory retention        cerebrum
- 10) The region of the brain responsible for the execution of **voluntary** movement is:   cerebrum
- 11) Which portion of the brain regulates homeostasis by linking activities of the endocrine and nervous system        hypothalamus
- 12) When a person thinks and solves problems, which part of the brain are they using?        cerebrum

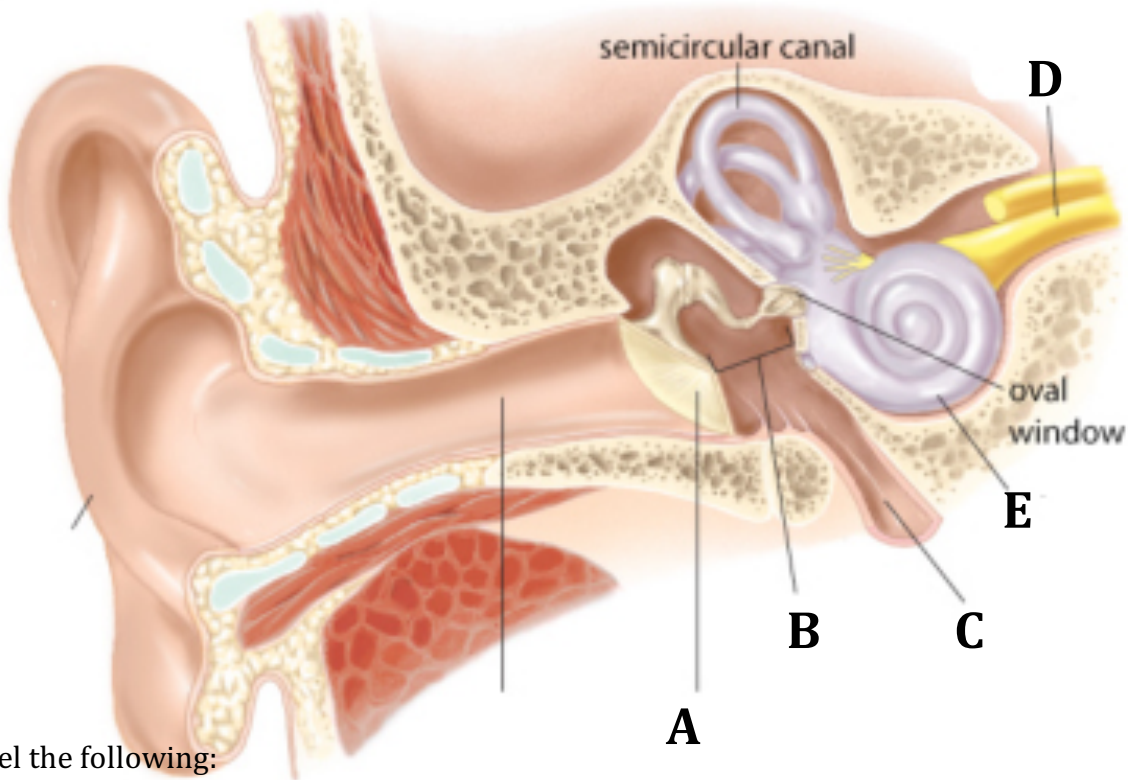


What are the names **AND** what do the following parts **DO**?

- | <u>Part Name</u>          | <u>Function</u> |
|---------------------------|-----------------|
| B- <u>ciliary muscles</u> | _____           |
| D- <u>Iris</u>            | _____           |
| G- <u>lens</u>            | _____           |
| I- <u>choroid</u>         | _____           |
| J- <u>retina</u>          | _____           |
| K- <u>fovea centralis</u> | _____           |
| L- <u>optic nerve</u>     | _____           |

What are the names of the following parts?

- A- sclera
- C- cornea
- F- aqueous humor
- H - vitreous humor
- M- blind spit



Label the following:

A- \_\_ear drum(tympanic membrane)\_\_\_\_\_ B - \_\_ossicles\_\_\_\_\_

E- \_\_eustachian tube\_\_\_\_\_

14) Using the above diagram, describe how you would identify or distinguish the Eustachian tube from the Auditory Nerve? Direction to brain (nerve) or down to throat (E tube)

15) Where does "C" lead to? Where does "D" lead to? C - to throat. D - to brain

16) What is the purpose of having 3 semicircular canals in different orientations?

Different ones are stimulated when moving in different directions

17) Which part converts and amplifies sound vibration from the air to sound vibration in fluid?

ossicles

18) Which organ **within the cochlea** is directly responsible for sensing sound and turning it into action potentials? ----- \_\_organ of corti\_\_

19) If your head is leaning forward with your chin on your chest, what is the

name of the part that contains sensitive hairs that sense this position stationary in space?

\_\_\_\_vestibule\_\_